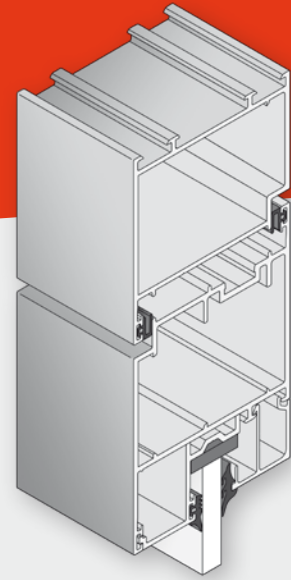


AA 611 RS

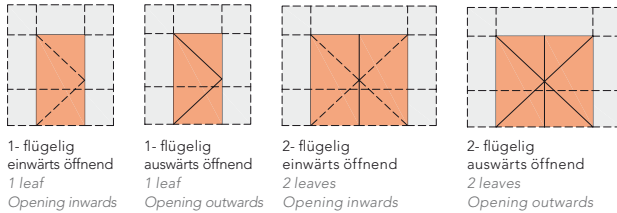
Ganzaluminium Türsystem für Rauchschutztüren Non Thermal Broken System for Smoke Control Doors



Güteprüfungen Performance

Rauchschutztüren Smoke Control Doors	DIN 18095 DIN 18095
Verglasungsarbeiten Glazing Works	DIN 18361 DIN 18361
Anforderungen an Fluchttürsysteme: Notausgänge Anti-Paniktüren Requirements to Escape Door Systems: Fire Escape Anti-Panik Doors	DIN EN 179 DIN EN 1125 DIN EN 179 DIN EN 1125
Qualitätsmanagementsysteme Quality Management Systems	Zertifiziert nach DIN EN ISO 9001 Certified according to DIN EN ISO 9001

Bauarten Construction Types



1-flügelig einwärts öffnend
1 leaf Opening inwards
1-flügelig auswärts öffnend
1 leaf Opening outwards
2-flügelig einwärts öffnend
2 leaves Opening inwards
2-flügelig auswärts öffnend
2 leaves Opening outwards

Innenelemente Interior Elements

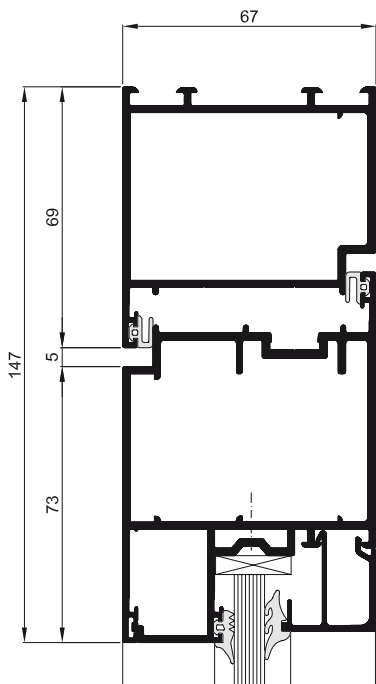
AA 611 RS

Rahmen/Flügel Standard

- ▶ Mittenverglasung
- ▶ 1-flg. oder 2-flg. einwärts öffnend

Frame/Leaf Standard

- ▶ Central glazing
- ▶ 1 or 2 leaves opening inwards



AA 611 RS

Rahmen/Flügel Standard

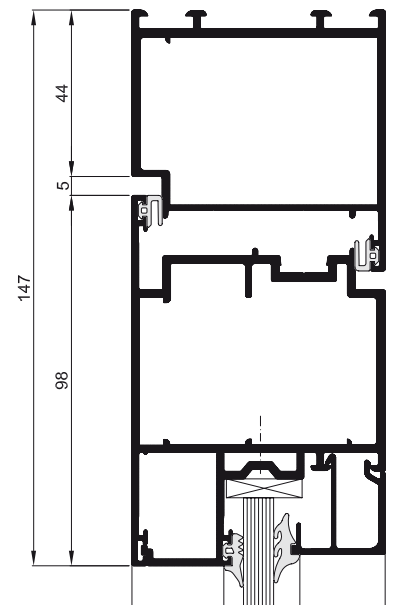
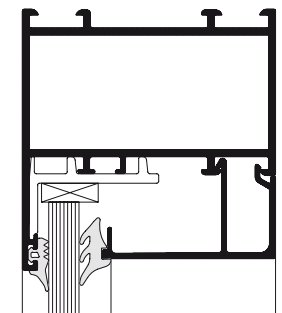
- ▶ Mittenverglasung
- ▶ 1-flg. oder 2-flg. auswärts öffnend

Frame/Leaf Standard

- ▶ Central glazing
- ▶ 1 or 2 leaves opening outwards

AA 611 RS

Optional Standardverglasung Optional Standard Glazing





Cramersche Fabrik, Menden – Deutschland
Cramersche Fabrik, Menden – Germany

Bodenabschlüsse
Door Bottom

AA 611 RS

Sockel – Standard

- ▶ ohne Schwelle
- ▶ einwärts/auswärts öffnend
- ▶ Bodendichtung mit auto-
matischer Absenkung

Base – Standard

- ▶ *without threshold*
- ▶ *opening inwards/outwards*
- ▶ *floor seal with automatic lowering*

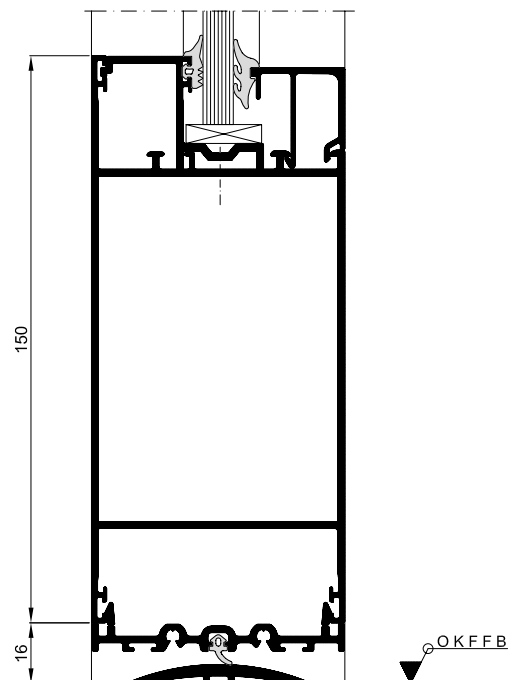
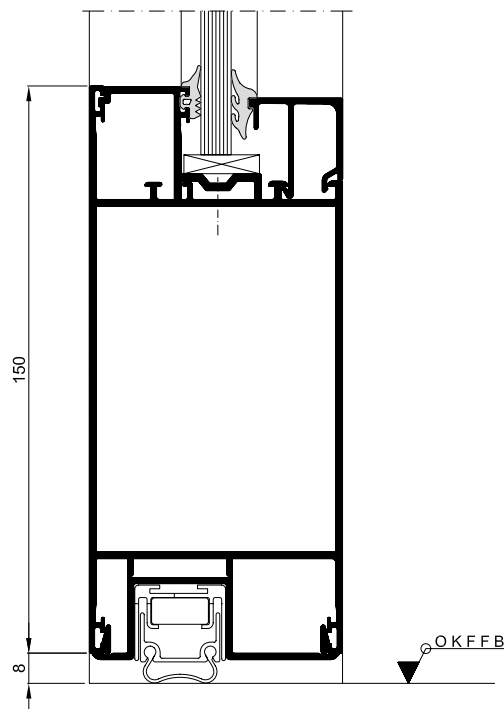
AA 611 RS

Sockel – Standard

- ▶ einwärts/auswärts öffnend
- ▶ Schwelle und Schleifdichtung

Base – Standard

- ▶ *opening inwards/outwards*
- ▶ *threshold and weather pile sealing*



Maßstab 1:2
Scale 1:2