

# Trifab® VG (VersaGlaze®)

Trifab® VG 450, 451 & 451T (Thermal) Framing Systems &  
Trifab® 451UT (Ultra Thermal) Framing System

Design + Performance  
Versatility with Unmatched  
Fabrication Flexibility



Preston Pointe, Louisville, KY

Architect: Potter & Associates Architects PLLC, Louisville, KY

Glazing Contractor: Kentucky Mirror & Plate Glass Company, Louisville, KY

Trifab® VG (VersaGlaze®) is built on the proven and successful Trifab® platform – with all the versatility its name implies. There are enough framing system choices, fabrication methods, design options and performance levels to please the most discerning building owner, architect and installer. The Trifab® VG family's newest addition, Trifab® 451UT (Ultra Thermal) framing system, is designed for the most demanding thermal performance and employs a “dual” Isolock® Thermal Break.

## Aesthetics

Trifab® VG framing systems offer designers a choice of front-, center-, back- or multi-plane glass applications. Structural silicone glazing (SSG) and Weatherseal glazing options further expand the designers' choices, allowing for a greater range of design possibilities for specific project requirements and architectural styles. All systems have a 4-1/2" frame depth – Trifab® VG 450 has 1-3/4" sightlines, while Trifab® VG 451/451T and Trifab® 451UT have 2" sightlines.



With seamless incorporation of Kawneer entrances or windows, including GLASSvent® visually frameless ventilators, Trifab® VG can be used on almost any project. These framing systems can also be packaged with Kawneer curtain walls and overhead glazing, thereby providing a full range of proven, and tested, quality products for the owner, architect and installer from a single source supplier.

### Economy

Trifab® VG 450, 451 and 451T framing systems offer four fabrication choices to suit your project (Trifab® 451UT available as screw spline fabrication only):

- **Screw Spline** – for economical continuous runs utilizing two piece vertical members that provide the option to pre-assemble units with controlled shop labor costs and smaller field crews for handling and installation.
- **Shear Block** – for punched openings or continuous runs using tubular moldings with shear block clips that provide tight joints for transporting large pre-assembled multi-lite units.
- **Stick** – for fast, easy field fabrication. Field measurements and material cuts can be done when metal is on the job.
- **Type B** – Same fabrication benefits as shear block except head and sill run through.

All systems can be flush glazed from either the inside or outside. The Weatherseal option provides an alternative to SSG vertical



Brighton Landing, Cambridge, MA  
Architects: ADD Inc., Cambridge, MA  
Glazing Contractors: Ipswich Bay Glass Company, Inc., Rowley, MA

mullions for Trifab® VG 450, 451 and 451T. This ABS/ASA rigid polymer extrusion allows complete inside glazing and creates a flush glass appearance on the building exterior without the added labor of scaffolding or swing stages. Additionally, High-Performance (HP) Flashing options are engineered to eliminate perimeter sill fasteners and associated blind seals.

### Finishes

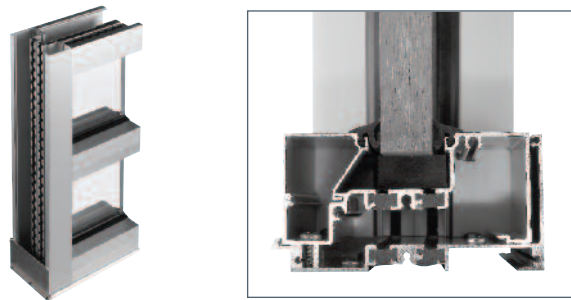
Architectural Class I anodized aluminum finishes are available in clear and Permanodic® color choices.

Painted finishes, including fluoropolymer that meet or exceed AAMA 2605, are offered in many standard choices and an unlimited number of specially-designed colors.

Solvent-free powder coatings add the “green” element with high performance, durability and scratch resistance that meet the standards of AAMA 2604.

### Performance

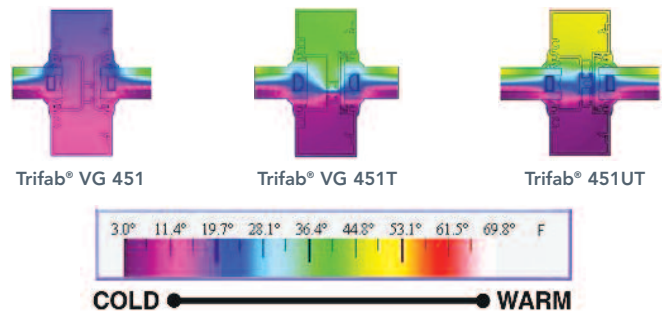
Kawneer’s Isolock® Thermal Break process creates a composite section, prevents dry shrinkage and is available on Trifab® VG 451T. For even greater thermal performance, a “dual” Isolock® Thermal Break is used on Trifab® 451UT.



Trifab® 451UT uses a “dual” Isolock® Thermal Break (right) and features a new HP (High Performance) sill design, which incorporates a screw-applied end dam (left), ensuring positive engagement and tight joints between the sill flashing and end dam.

U-factor, CRF values and STC ratings for Trifab® VG vary depending upon the glass plane application. Project specific U-factors can be determined for each individual project. (See the Kawneer Architectural Manual or Kawneer.com for additional information).

Thermal simulations showing temperature variations from exterior/cold side to interior/warm side.

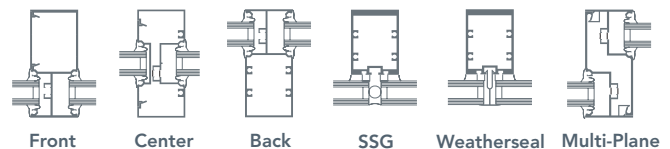


### Performance Test Standards

Air Performance	ASTM E 283
Water	AAMA 501 and ASTM E 331
Structural	ASTM E 330
Thermal	AAMA 1503
Thermal Break	AAMA 505 and AAMA TIR-A8
Acoustical	AAMA 1801 and ASTM E 1425

### Trifab® VG 450, 451 and 451T glazing options

(note: Trifab® 451UT available as center set glass plane only).



Kawneer Company, Inc.  
Technology Park / Atlanta  
555 Guthridge Court  
Norcross, GA 30092

[kawneer.com](http://kawneer.com)  
770 . 449 . 5555

