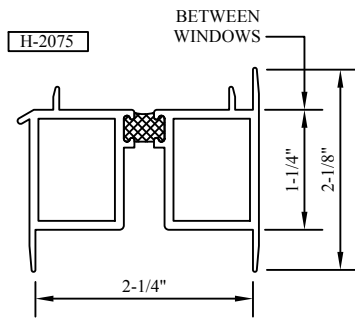


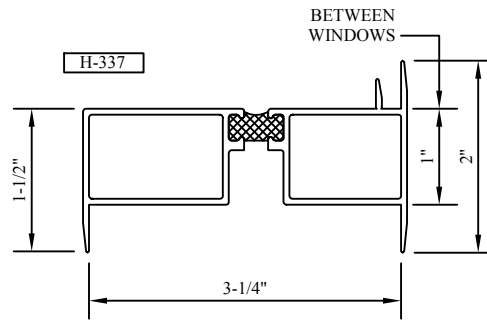
Half Scale Sections

FOR 2-1/4" SYSTEM



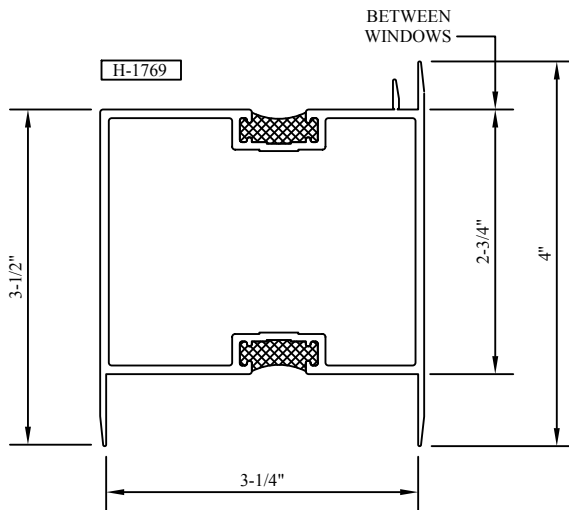
2-1/4" STRUCTURAL STACK MULLION
H-2075

FOR 3-1/4" SYSTEM



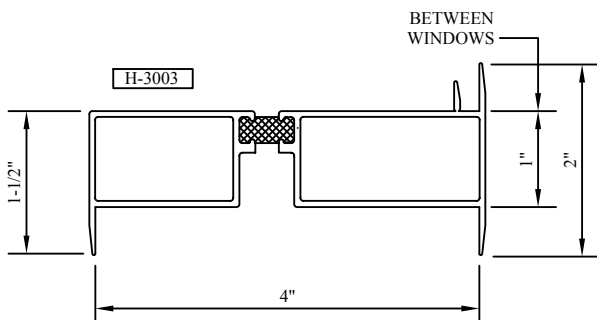
TUBE OFFSET MULLION
H-337

FOR 3-1/4" SYSTEM

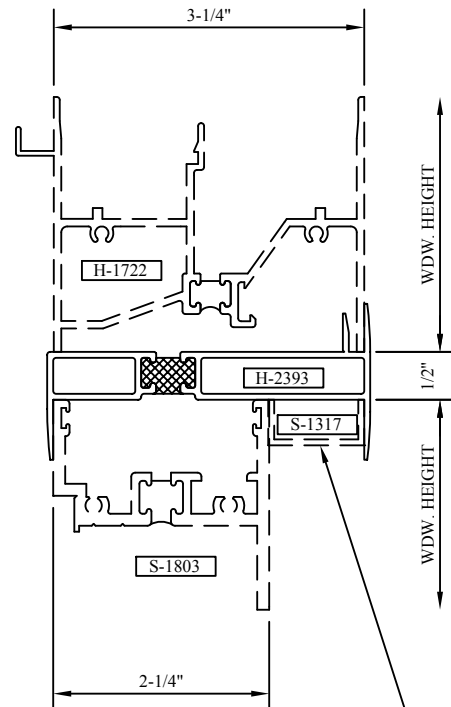


3-3/8" X 4" STRUCTURAL STACK MULLION
H-1769

FOR 4" SYSTEM



TUBE OFFSET MULLION
H-3003



ALUM. CHANNEL USED
WITH 2-1/4" PRODUCTS

STACK MULLION
H-2393