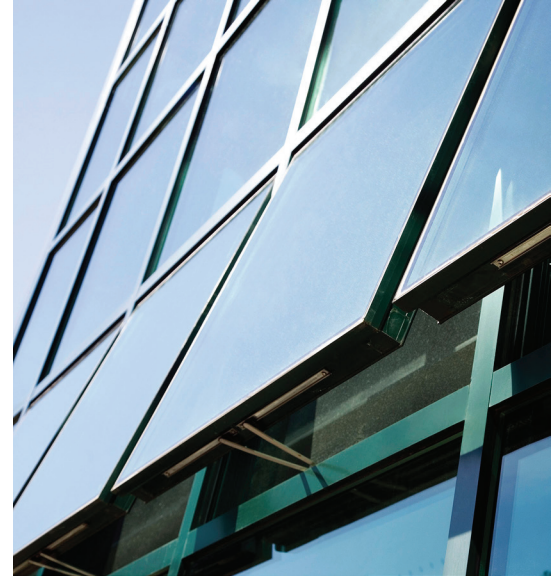


GLASSvent™ Windows for Storefront Framing and Curtain Wall and GLASSvent™ UT Windows

Kawneer’s commitment to social and environmental responsibility is rooted in high performing, sustainable solutions that extend beyond energy efficiency to elements like daylighting, acoustical efficiency, recyclability, occupant security and occupant comfort.

Our extrusions use a minimum of 50% recycled content achieved through a combination of pre- and post-consumer recycled content. We also have Environmental Product Declarations (EPDs) that when coupled with this Material Transparency Summary (MTS) gives a full sustainable product overview. Sustainability information on this product as well as our entire portfolio can be found on the [Sustainability page at www.kawneer.com](http://www.kawneer.com)



Material Inventory

The material inventory below discloses the known ingredients within this product at a concentration level of 100 PPM (0.01%) and higher, the Chemical Abstract Services Registration Number (CAS#), role and percent by weight within the product. This inventory list meets the guidelines for **LEED v4 MR Credit: Building Disclosure and Optimization – Material Ingredients – Option 1 and LBC Materials Petal I10-2 Supporting Data and has no LBC Red List materials.*** This product is manufactured at one of our five North American locations: Bloomsburg, PA; Cranberry, PA; Lethbridge, Canada; Springdale, AR and Visalia, CA.

Role	Complex Material	Raw Material	CAS#	Percent by Weight
Frame	Anodized Aluminum	Aluminum	7429-90-5	75-80
Glass	Double Pane IGU	Glass	65997-17-3	<15.0
		Aluminum (spacer)	7429-90-5	<1.5
		Silicone Rubber	63394-02-5	<1.5
		Zeolite (desiccant)	1318-02-1	<=1.0
		Silica	7631-86-9	<0.2
		Polydimethylsiloxane	63148-62-9	<0.1
		Polyvinyl Butyral (Interlayer)	63148-65-2	<0.05
		Calcium Carbonate (sealant)	471-34-1	<0.02
Thermal & Weathering	EPDM Compound	Ethylene Propylene Diene Terpolymer	25038-36-2	<0.05
		Carbon Black	1333-86-4	<0.05
		Kaolin	1332-58-7	<0.05
	ABS/ASA Compound	Acrylonitrile Butadiene Styrene	9003-56-9	<0.1
		Acrylonitrile Styrene Acrylate	26299-47-8	<0.1
	Polyurethane Foam	Polyurethane	9009-54-5	<0.1
		Acrylic	37325-11-4	<0.1
	Santoprene/PP Compound	Ethylene Propylene Diene Terpolymer	25038-36-2	<0.8
Polypropylene		9003-07-0	<0.8	
White oil		8042-47-5	<0.2	
Fasteners	Stainless Steel	Stainless Steel	12597-68-1	<1.0
Hardware	White Bronze	Copper	7440-50-8	<0.3
		Zinc	7440-66-6	<0.2
		Nickel	7440-02-0	<0.03
		Manganese	7439-96-5	<0.08
		Tin	7440-31-5	<0.01

* For standard anodized configurations using standard hardware and may not compile with all configurations, paint finishes or custom products