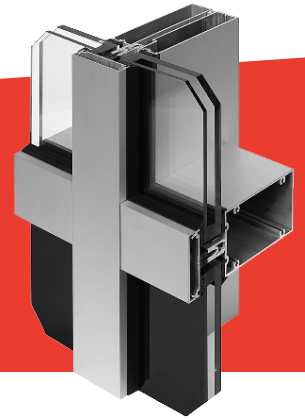


PRODUCT GREEN GUIDE

1630 SS IR Curtain Wall System



1630 SS IR Curtain Wall is a curtain wall system that defends against high winds, heavy rains, hurricanes and more while delivering a flexible design, larger spans, and quick installation.

RATING SYSTEMS

LEED v4 BD+C: New Construction

- EA: Optimize Energy Performance
- EA: Renewable Energy Production
- MR: Environmental Product Declarations
- MR: Sourcing of Raw Materials
- MR: Material Ingredients
- MR: Source Reduction - Lead, Cadmium, and Copper
- MR: Construction and Demolition Waste Management
- EQ: Thermal Comfort
- EQ: Daylight
- EQ: Quality Views
- EQ: Acoustic Performance

Living Building Challenge 3.1

- IMP 06: Net Positive Energy
- IMP 07: Civilized Environment
- IMP 08: Healthy Interior
- IMP 09: Biophilic Environment
- IMP 10: Red List
- IMP 12: Responsible Industry
- IMP 13: Living Economy Sourcing
- IMP 14: Net Positive Waste
- IMP 16: Universal Access

WELL Building Standard

- 01: Air Quality Standards
- 03: Ventilation Effectiveness
- 04: VOC Reduction
- 08: Healthy Entrance
- 11: Fundamental Material Safety
- 12: Moisture Mgmt
- 14: Air Filtration Mgmt
- 15: Increased Ventilation
- 19: Operable Windows
- 25: Toxic Material Reduction
- 26: Enhanced Material Safety
- 28: Cleanable Environment
- 54: Circadian Lighting
- 56: Solar Glare Control
- 61: Right to Light
- 62: Daylight Modeling
- 63: Daylight Fenestration
- 72: Accessible Design
- 74: Exterior Noise Intrusion
- 76: Thermal Comfort
- 97: Material Transparency
- 98: Organizational Transparency

FEATURES

- 3" (76.2mm) sightline
- 7-13/16" (198.4mm) or 8-13/16" (223.8mm) depth
- Infill 1-5/16" (33.3 mm)
- Thermal performance
- Low to mid rise application
- Blast mitigation
- Hurricane resistance
- Two color option
- Standard anodized finishes only

DOCUMENTS



Environmental Product Declaration

Document no. 47868332121.105.1
Product-specific Type III EPD



Material Transparency Summary

Document no. MTSD180EN
Manufacturer Material Ingredient Inventory