

2500 UT Unitwall™ System

Exceptional Performance
with Expansive Aesthetics

think
limitless

Your vision is unique and complex. It pushes boundaries. It takes design to a new level. It personifies aspirational performance and expansive aesthetics. It demands respect and inspires awe. Your vision doesn't come in a box.

The 2500 UT Unitwall™ System marries the elegant aesthetic of a gleaming glass unitized curtain wall with ultra-thermal performance built into the design, allowing you to think limitless. A cost-effective, unitized framing system that reduces the time to fabricate, assemble, glaze and install, the 2500 UT Unitwall™ System also offers ultra-thermal performance.

With a variety of flexible options – from four-sided captured exterior covers to structural silicone glazed (SSG) configurations – this sturdy, high-performance system is ideal for commercial applications, mid-to high-rise projects and more.

The 2500 UT Unitwall™ System employs a continuous polyamide thermal break vertically and horizontally, providing ultra-thermal performance levels in a cost effective unitized curtain wall system. In addition, the one-piece polyamide thermal break eliminates pressure plates and fasteners, reducing the amount of metal used and time required to assemble the system. And ultra-thermal performance allows architects and designers to take their vision to a new level, regardless of climate or location. The 2500 UT unitized curtain wall system's virtually seamless walls of glass connect interior building spaces comfortably with the outside world, personifying aspirational performance and expansive aesthetics.



Economy & Flexibility

The 2500 UT Unitwall™ System provides options that allow architects and contractors to meet tough project timelines, while delivering enhanced thermal performance and lower overall operating costs for building owners. Unitized construction accelerates installation while minimizing disruption to the surrounding area or existing tenants, making it an exceptional choice for new or retrofit applications, particularly in urban areas or where space is limited.

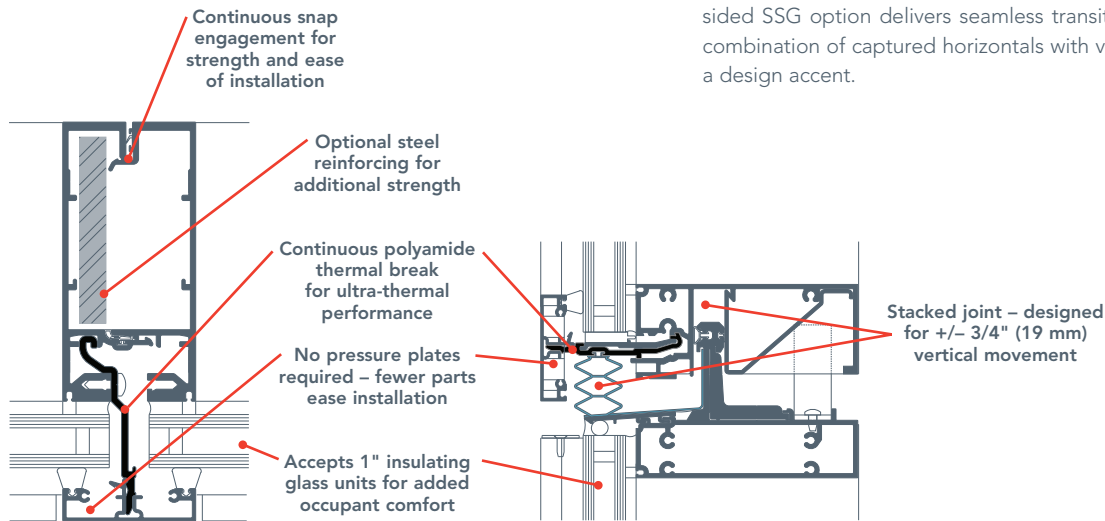
The System is available to glazing contractors in stock lengths, fabricated or pre-assembled and glazed – offering the flexibility to meet a range of budgets, worker availability and timelines.

- With stock lengths, glazing contractors can provide fabrication and pre-glazing under controlled conditions in their own shop.
- Factory-fabricated and glazed units make it easier to meet tight construction schedules, reduce field labor costs and moderate the demand for job site equipment.

Cost savings on metal and fabrication materials can be realized when compared to a typical curtain wall configuration.

Built-In Performance

2500 UT Unitwall™ System has performance built into the design. Three-way adjustable anchoring addresses construction variations at the floor slab. Stacked joints are designed for +/- 3/4" (19 mm) of total vertical movement to account for building expansion and contraction. And two-piece verticals leverage a continuous snap engagement to provide maximum strength while eliminating the time consuming process of installing anti-buckling clips and rotating the adjoining unit around the clips and into place.



VERTICAL CAPTURED MULLION

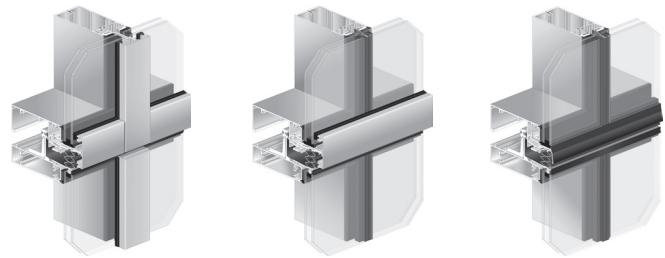
HORIZONTAL STACK JOINT

Performance Test Standards

The 2500 UT Unitwall™ System has been tested in accordance with all major standards for curtain walls:

Air Infiltration	ASTM E283, NFRC 400
Water – Static	ASTM E331
Water – Dynamic	AAMA 501.1
Structural – Uniform Wind Load	ASTM E330
Thermal Cycling	AAMA 501.5
Seismic	AAMA 501.4
Inter-story Vertical Displacement, 3 cycles	AAMA 501.7
Thermal Transmittance – U-Factor	AAMA 1503, AAMA 507, NFRC 100
Condensation Resistance (CRF, I, CR)	AAMA 1503, CSA A440.2, NFRC 500
Overall Solar Heat Gain Coefficient (SHGC, VT)	AAMA 507, NFRC 200
Sound Transmission (STC, OITC)	AAMA 1801, ASTM E90, ASTM E1425

2500 UT Unitwall™ System offers three distinctive aesthetics



Four-sided captured system allows for crisp sightlines

Captured horizontals with vertical SSG mullions offers a design accent

Four-sided SSG option delivers seamless transition between units

Aesthetics

The 2-1/2" profile of the 2500 UT unitized curtain wall system allows for maximum design opportunities from the base chassis. The four-sided captured system allows for crisp sightlines, while the four-sided SSG option delivers seamless transition between units, or the combination of captured horizontals with vertical SSG mullions offers a design accent.

Kawneer Company, Inc.
Technology Park / Atlanta
555 Guthridge Court
Norcross, GA 30092

kawneer.com
kawneergreen.com
770 . 449 . 5555

