

KAWNEER

PROJECTPROFILE



The Edge

Amsterdam, Netherlands

ARCHITECT

PLP Architecture, London, UK
Van den Oever Zaajer & Partners,
Amsterdam, Netherlands

CUSTOMER / INSTALLER

Rollocate Staphorst
Staphorst, Netherlands

GENERAL CONTRACTOR

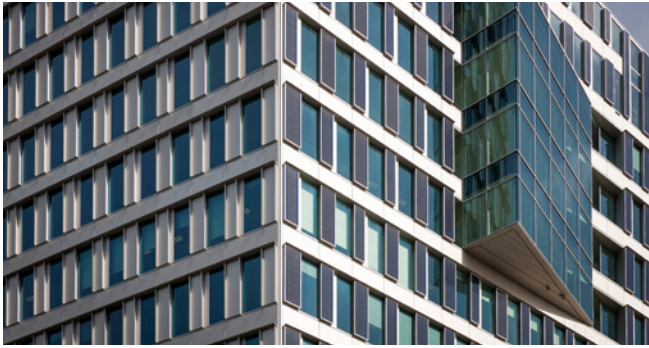
G&S Bouw, Amsterdam, Netherlands

CERTIFICATION

BREEAM®*
Rating: Outstanding
Score: 98.35%

FEATURED PRODUCTS

Project-Based RT 62 Windows
Project-Based AA®9562 Unitized Wall System
AA®100 Q Curtain Wall



Photos: © Lighthouse Productions / Dirk Verwoerd

Living and Working on The Edge in the Netherlands

High-performing custom solutions from Kawneer contribute to highest-ever BREEAM-rated building in the world.

Recognized as the “most sustainable office building in the world,” The Edge in Amsterdam’s Zuidas business district is beautiful, intelligent and unique. From the 15-story atrium, which allows light to penetrate through the building, to the slanted roof that pierces the skyline, the 40,000m² office building, home to Deloitte, is making an impression worldwide.

Designed by PLP Architecture in London along with Amsterdam-based Van den Oever Zaajer & Partners, The Edge utilizes some of the most advanced products and technology in the industry. With a long history of proven engineering and customization capabilities, Kawneer was called on to provide a range of systems and solutions for the intricately designed facility.

Sustainability was a major driver in overall building design and contributed to the building’s BREEAM “Outstanding” rating (98.35%). BREEAM does not serve as a checklist for builders to work through on a project, but instead acts more as a reward system for buildings that incorporate sustainability into performance. Points are earned in several categories, including energy, health and well-being, and materials.

Design Highlights

Kawneer products contributed to energy points in several ways. Kawneer’s high-performing products, from unitized and stick curtain wall systems to windows, make up the majority of the building façade and provide excellent insulation, helping reduce overall energy loss. The range of solutions from Kawneer also contributed to points in the health and well-being category by providing optimum daylighting and transparency into the building. And since Kawneer uses aluminum, a sustainable and highly efficient building material, the project received points in the materials category as well.

Challenges

- To contribute to the overall sustainability of the building and health and comfort of the occupants, the owners wanted to incorporate natural ventilation into the façade.
- This one-of-a-kind project required several complicated processes to correctly develop the ventilated unitized panels and ensure they were installed and performing optimally.

- The shape and location of the building posed several thought-provoking challenges to the team. On their own, rooflines with multiple angles would make for a tough installation. However, the architect also wanted to see perfectly vertical lines when looking at the building.

Solutions

- The atrium façade was constructed using a custom version of Kawneer’s AA®9562 Unitized Wall System. Kawneer created a mock-up design and provided support with fabrication and assembly to ensure the ventilated panels were installed to specification.
- Each product was made specifically for this project to meet the scope and needs required. Kawneer’s ability to customize products made it top of mind for the architects when specifying this project.
- To provide a clear understanding of how the products would piece together to achieve the architect’s aesthetic vision, the team developed several mock-ups including a fully working prototype of one element that was then tested for wind load and water penetration. Through inspired engineering and installation, each of the profiles were able to connect along the outside of the building, bringing it all together.

David Riemersma, marketing manager for Kawneer Netherlands, noted that one of the most memorable points of the project was seeing the team come together to overcome the challenges the project presented and seeing each of the individual businesses work in harmony to complete such a massive undertaking. Riemersma said, “In the end, it’s rewarding to walk into the building to see massive amounts of light streaming throughout the space, people occupying the many rooms and areas, and businesses working more productively and efficiently, partly because of the products that we delivered. It is truly amazing to see it all come to life – imagination becoming reality due to the ability to create wonderful products that are used in innovative projects.”

Ultimately, design, development and production for The Edge took approximately three years. This project is another example of Kawneer’s commitment to providing intelligent solutions that deliver high performance, beautiful aesthetics and superior thermal efficiency, making best-in-class design and performance possibilities a reality.

Featured Products

Project-Based RT 62 Windows, Project-Based AA®9562 Unitized Wall System, AA®100 Q Curtain Wall

Kawneer Company, Inc.
Technology Park / Atlanta
555 Guthridge Court
Norcross, GA 30092

kawneer.com
770 . 449 . 5555

